

# GHJGAGE®

Electronic Security Home Safe  
GHJGAGE Series **User Manual**

GHJGAGE® Safe delivers security exactly where you want it.

## Safety and Compliance

- Please read this user manual carefully before using the appliance. Learn how to use the appliance and the different switches. Follow the safety and operating instructions to avoid any risks or hazards. Keep this manual for future reference.
- To reduce the risk of theft, the safe must be fixed to the wall or floor.
- **Please store the backup key in a hidden and safe place.**
- Please do not put the **Backup Key** and **External Power Supply Box** in the safe.
- The preset password should be changed before using the safe.
- Put the product somewhere stable and secure, but not too high up, in case it falls over and hurts someone.
- Make sure you keep liquids away from the control panel and the battery compartment. If liquid spills onto the electronic parts, it could damage them and stop them from working.
- Don't try to take the product apart yourself.

## Usage Guidelines Videos

- Scan the QR code to receive detailed operation video.

• 3 Unlock Methods	• Set Password	• Mute Function
		

## Customer Support/Warranty

### Customer Support

If you have a problem with your GHJGAGE® safe that is not answered in the FAQ section of this manual, we encourage you to email us:

**customersafe@outlook.com**

- Or scan the QR code on the right to contact our email.
- For more information, please visit **<http://www.ghjgage.net>**.



### How Shall View Tutorial Videos?



**GHJGAGE®**

<http://www.ghjgage.net/>

1. Visit our website via: **<http://www.ghjgage.net>**
2. Select the " **Customer Service** " from the navigation bar
3. Click " **How To Video** "
4. Select the product model you purchased

#### How shall I replace keys?

1. Visit our website via: <http://www.ghjgage.net>
2. Select the " **Customer Service** " from the navigation bar
3. Click " **Replace Keys** "
4. Fill in the required information

#### How shall I order accessories?

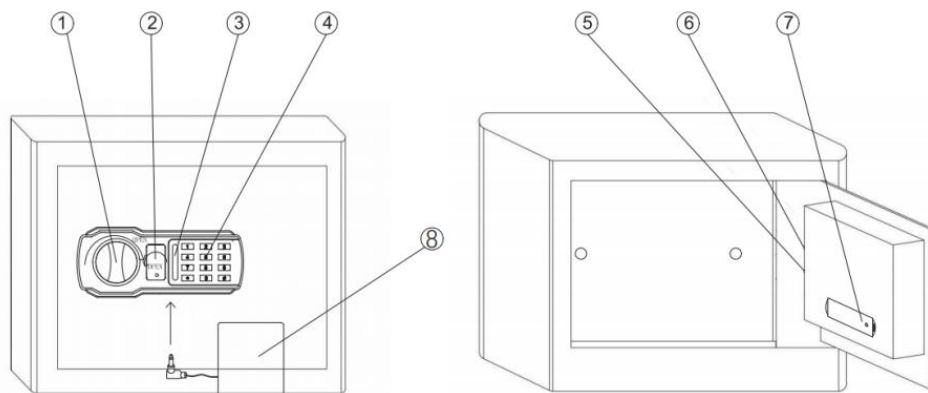
1. Visit our website via: <http://www.ghjgage.net>
2. Select the " **Customer Service** " from the navigation bar
3. Click " **Order Accessories** "
4. Fill in the required information

- For more information, please visit **<http://www.ghjgage.net>**. Or scan the QR code on the right.



Email: **customersafe@outlook.com**

## Product Description



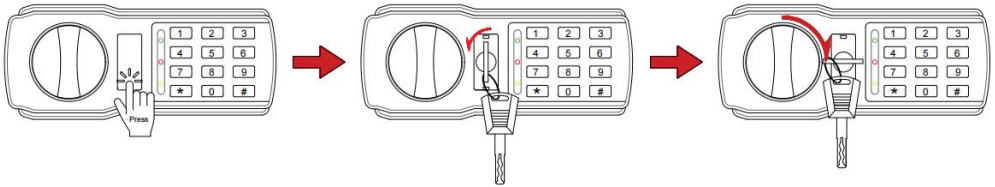
① Knob	② Backup Key Cover	③ Indicator Light
④ Digital Keypad	⑤ Interior Light	⑥ Reset Button
⑦ Battery Compartment	⑧ External Power Supply Box	

## Included Components

- 1 × Electronic Safe Box (SP Model)
- 1 × Fireproof Bag
- 2 × Backup Keys
- 1 × External Power Supply Box (No batteries included)
- 4 × Expansion Screws
- 1 × Instruction Manual

# Three Ways To Open The Safe

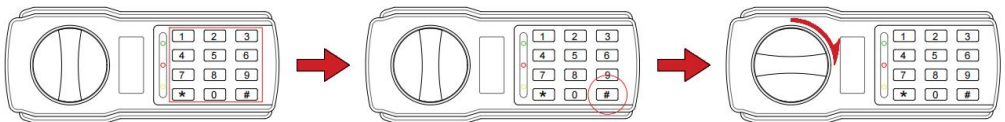
## ● The first unlocking method: Use the backup key.



1. Remove the backup key cover.
2. Insert the backup key and turn it counterclockwise.
3. At the same time, turn the knob clockwise to open the safe.

**【NOTICE】** Press the bottom of the key area to open the backup key cover. This backup key cover has a hidden decorative feature for everyday use.

## ● The second unlocking method: Use your passcode.

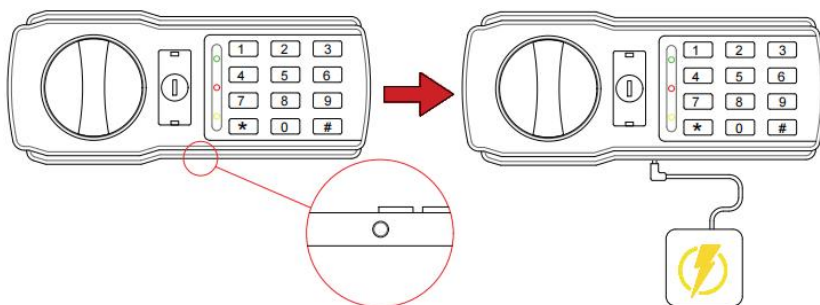


1. Input your passcode (3 to 8 digits) on the digital keypad. Press “#” key to confirm.
2. Rotate the knob clockwise and open the door

### **【NOTICE】**

- First time users should change the default passcode as soon as possible to prevent unauthorized access to your safe. Keep the code confidential.
- The default passcode (user code) is “159”.

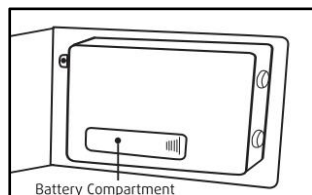
- The third unlocking method: Use the external power supply box + passcode.



When the safe box's battery is too low to open the door, connect a suitable **External Power Supply Box**(No 4 × AA batteries included) to the backup supply socket for supplying power to the safe.

## Battery Installation

1. Open the battery compartment and insert **4 × AA batteries (not included)**
2. Place the battery cover you are now ready to program your safe.



### 【NOTICE】

- If the green and red indicator lights illuminate simultaneously when opening the safe using the combination, it means that the battery is critically low and needs replacing. You should replace the **4 × AA batteries** in your safe.

## Anti-Lockout Protection

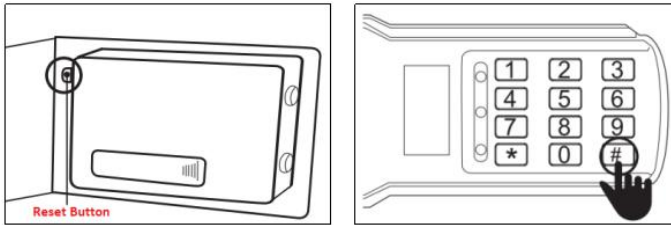
1. Condition: Dead batteries lasting >30 mins.
2. Result: User code automatically resets to default passcode(159).
3. User Action Required: Reprogram your user code immediately after

power returns. Please refer to the “ **User Code Programming** ” section in this manual for detailed steps.

**【NOTICE】** This feature is a crucial safety mechanism, ensuring you can always regain access to your safe even if you forget your passcode.

## User Code Programming

1. With the door unlocked, press the “ **Reset Button** ”.
2. Enter the new user code (3 to 8 digits), and press the “ **#** ” to confirm.



## Master Code Programming

1. With the door unlocked, enter “ **00** ” and press the “ **Reset Button** ”.
2. Enter the new master code (3 to 8 digits), and press the “ **#** ” to confirm.

### **【NOTICE】**

- The “ **#** ” button is the password confirmation button, you must press the confirmation button at the end of each password entry.
- You can set 1 or 2 passwords as needed. We recommend setting 2 passwords to avoid being unable to open the door when you forget one of them.

## Mute Function Setting

1. Press “ **\*633** ” to turn on the mute function.
2. Press “ **\*66** ” to turn off the mute function.

## Locking the Safe

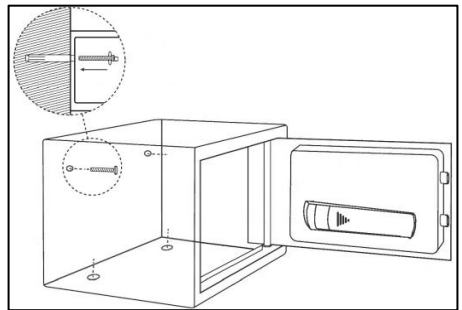
- Turn the knob anticlockwise to close the door.

## Automatically Locked

1. Three consecutive incorrect entries will activate the warning beep for 20 seconds.
2. Another three consecutive incorrect entries will activate the warning beep for 5 minutes.

## Securing to a Floor or Wall

1. Position the safe on a flat surface where you want to mount it.
2. Use a pencil to mark the holes for drilling.
3. Drill pilot holes.
4. Position safe in place and install screws through safe into pre-drilled. Tighten screws.



### 【NOTICE】

- Make sure you have enough clearance for the lid to open properly before mounting the safe.
- Use the expansion bolt when there is a concrete wall surface. Use the clamping screw when there is a wooden wall surface.





# ***GHJGAGE®***

**Customer Service Contact Email: [customersafe@outlook.com](mailto:customersafe@outlook.com)**

**- THANK YOU FOR YOUR BUSINESS -**